

**CERTIFIED LAND CORNER RECORDATION**

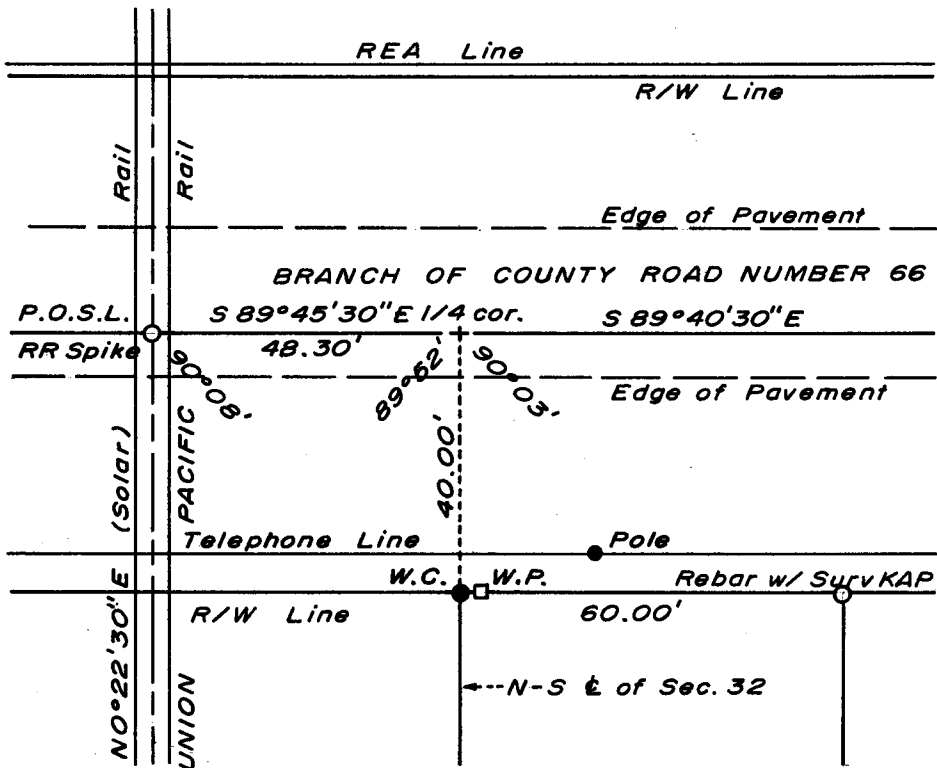
DESCRIPTION OF CORNER EVIDENCE FOUND, AND ORIGINAL RECORD (If known)

LOCATION Obliterated corner.  
 1/4 S.29 Corner position re-established from Union Pacific Railroad plans and  
 1/4 S.32 calls shown on the plat (of) "Lindbergh".  
 T.16N., R.60W. G.L.O. record - Not known.  
 6th P.M.

DESCRIPTION OF MONUMENT AND ACCESSORIES ESTABLISHED  
 TO PERPETUATE THE ORIGINAL LOCATION OF THIS CORNER:

At the corner: No permanent monument set, corner falls in travelled way of road.  
 Accessories: Set a 1 1/2" dia. x 30" (concrete-filled) iron pipe with brass cap, stamped as a witness corner, S 0°22'30" W, 40.00 feet distant.  
 Set 4" x 4" Redwood post with aluminum sign, 2 feet east of W.C.

SKETCH, WITH COURSE AND DISTANCE TO ADJACENT CORNER IF DETERMINED IN THIS SURVEY.  
 (May Sketch or Paste Reproduction on Reverse Side.)



Brass cap set  
 4" above ground.



Brass cap stamped:  
 T.16N. R.60W.  
 W. ↑ C.  
 1/4 S. 29  
 1/4 S. 32  
 LS 519 1974

I, R.L. Hudson certify that I have carefully performed or reviewed the work done on the diagrammed corner as reported on this recordation form and approve the same.

R.L. Hudson Wyoming L.S. No. 519  
 Signature of Surveyor Registration No.

STATE OF WYOMING,  
 Office of Clerk and Recorder,  
 County of Saramie

This "corner record" was filed for record on the 24 day of June, 1974, was noted on the cross-index plat and is assigned page No. \_\_\_\_\_, in book No. \_\_\_\_\_.

John B. Huismann  
 County Official

Cross Index No. <u>V 17</u>	T. <u>16</u>	R. <u>60</u>	<u>6</u> Mer.
_____	T. _____	R. _____	Mer.
_____	T. _____	R. _____	Mer.
_____	T. _____	R. _____	Mer.
_____	T. _____	R. _____	Mer.
_____	T. _____	R. _____	Mer.
_____	T. _____	R. _____	Mer.

Photographed ✓  
 Indexed ✓  
 Posted ✓  
 Assessor \_\_\_\_\_

The State of Wyoming }  
 County of Laramie } ss

This instrument was filed for record  
 at 1257 o'clock 4 M. on the  
24 day of June  
 A. D. 1924 and duly recorded in  
 Book \_\_\_\_\_ on page \_\_\_\_\_

*John B. Stillman*

County Clerk & Ex-Officio Register of Deeds  
 By [Signature] Deputy